

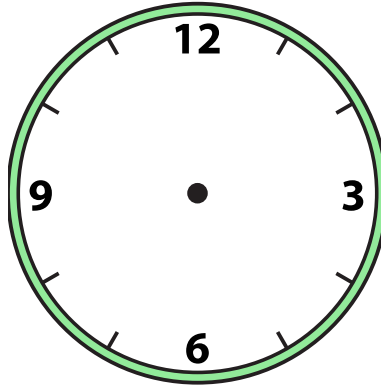


Draw the hour and minute hand on the clock so it represents the time shown.

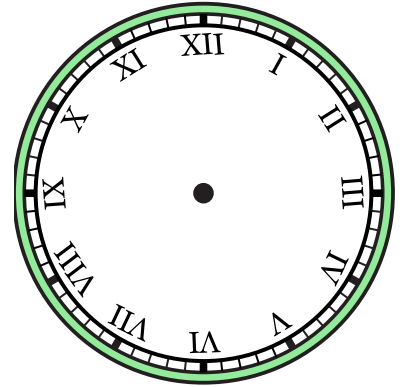
1) 8:00



2) 12:00



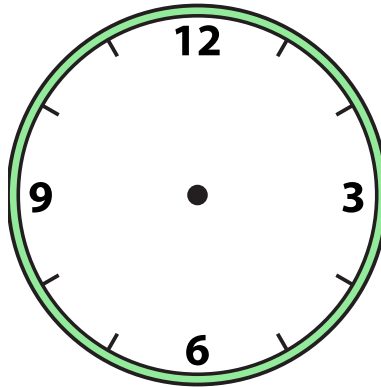
3) 3:30



4) 8:30



5) 4:30



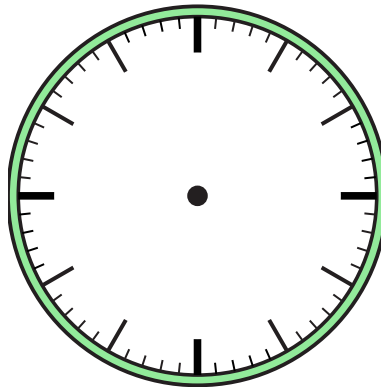
6) 3:00



7) 12:30



8) 11:00



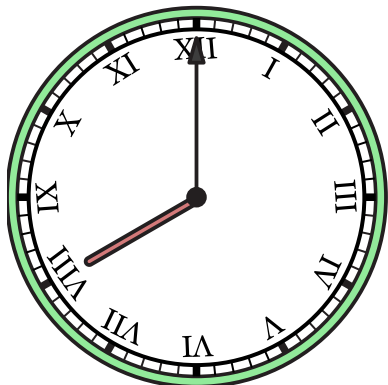
9) 12:00



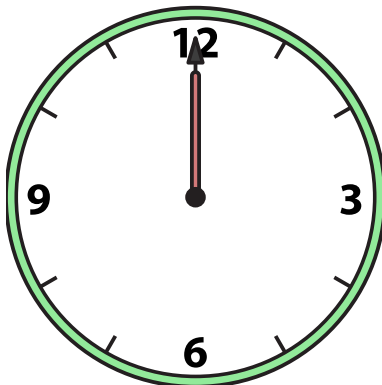


Draw the hour and minute hand on the clock so it represents the time shown.

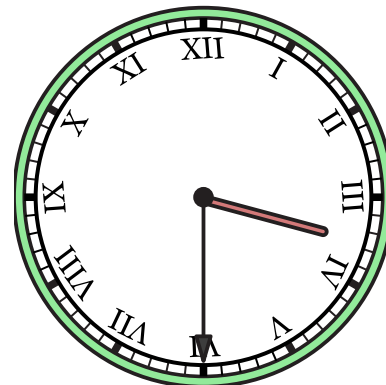
1) 8:00



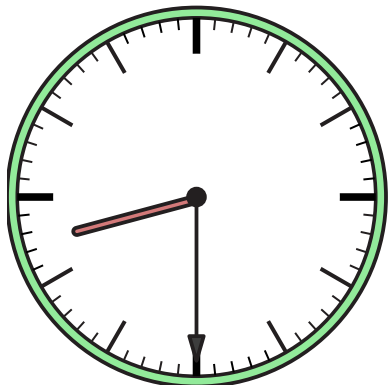
2) 12:00



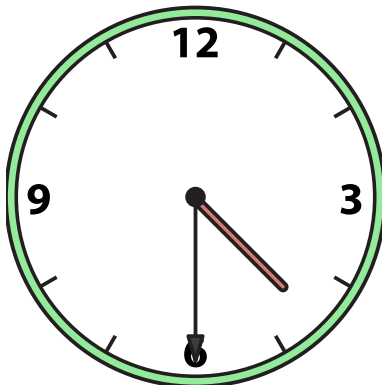
3) 3:30



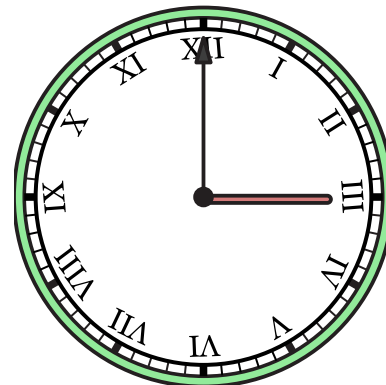
4) 8:30



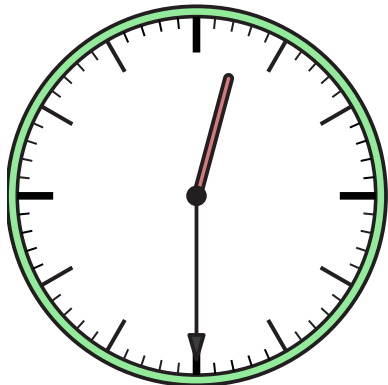
5) 4:30



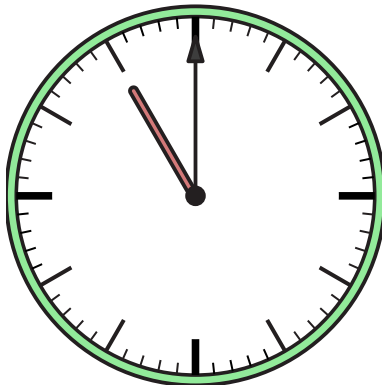
6) 3:00



7) 12:30



8) 11:00



9) 12:00

