

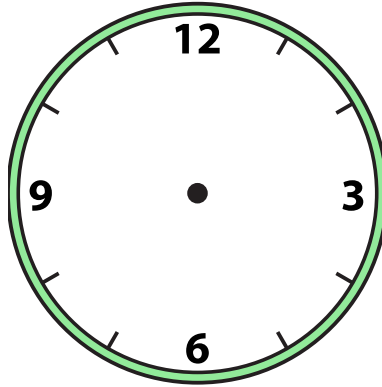


Draw the hour and minute hand on the clock so it represents the time shown.

1) 12:00



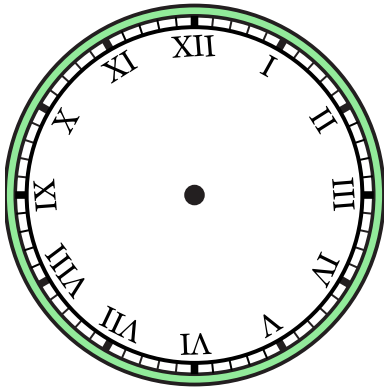
2) 6:30



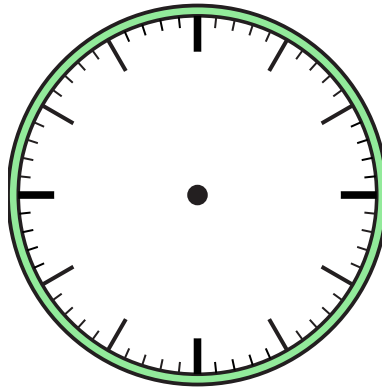
3) 7:00



4) 8:30



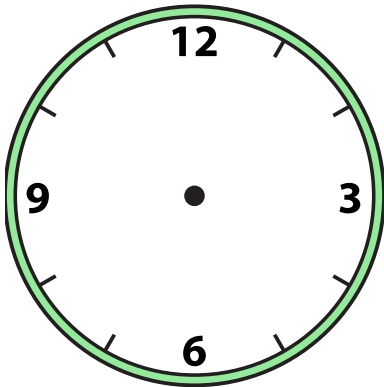
5) 2:00



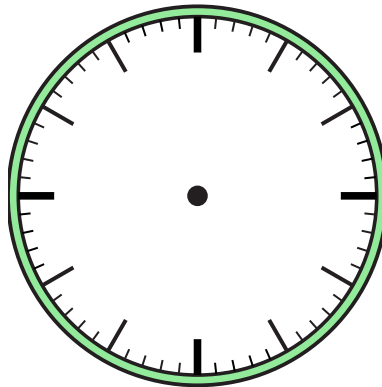
6) 5:00



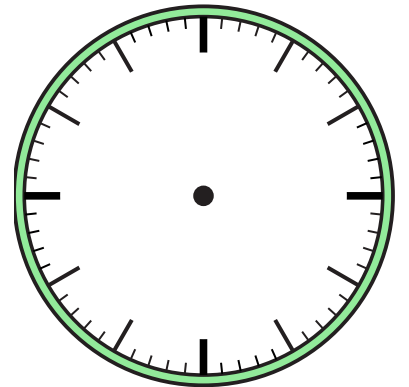
7) 4:30



8) 2:30



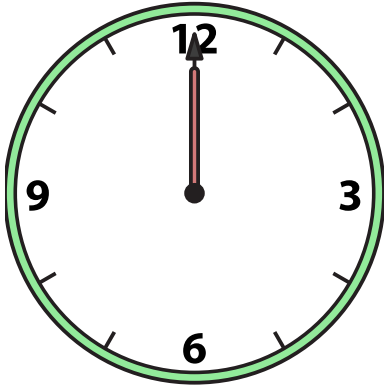
9) 9:30



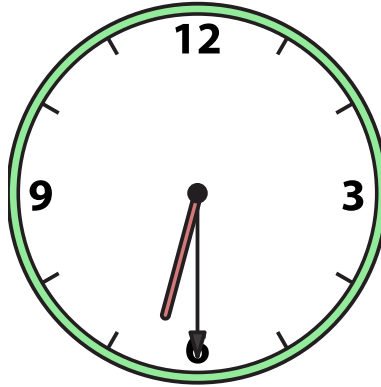


Draw the hour and minute hand on the clock so it represents the time shown.

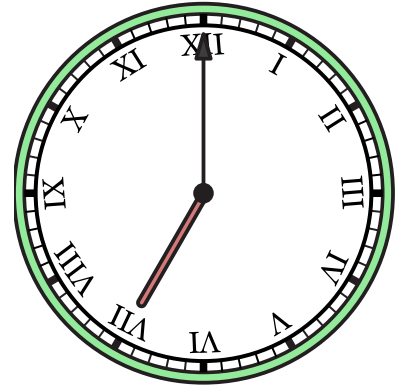
1) 12:00



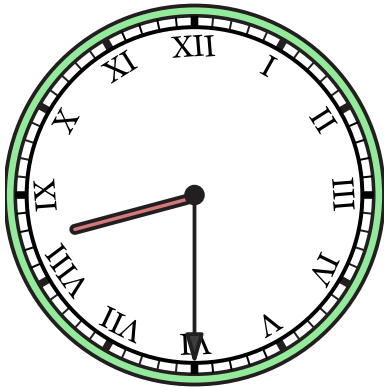
2) 6:30



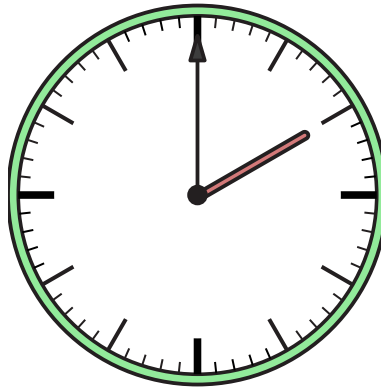
3) 7:00



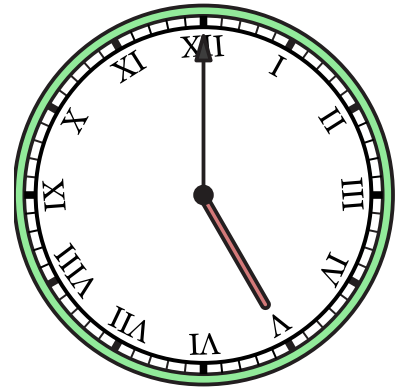
4) 8:30



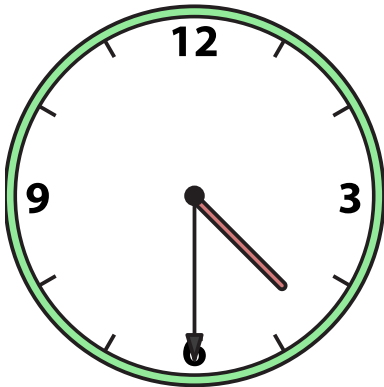
5) 2:00



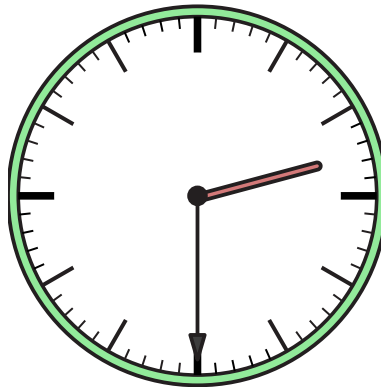
6) 5:00



7) 4:30



8) 2:30



9) 9:30

