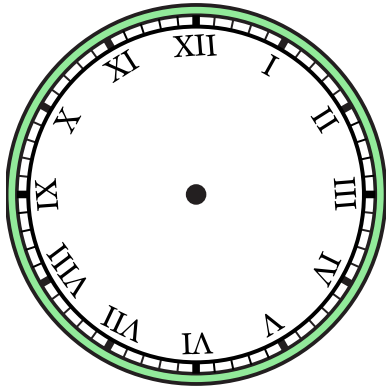




Draw the hour and minute hand on the clock so it represents the time shown.

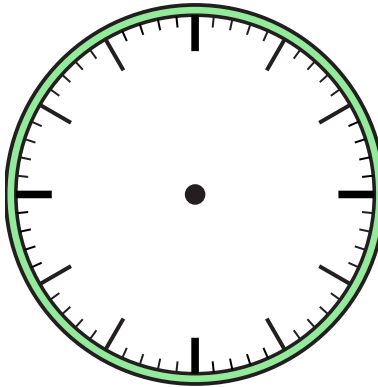
1)

6:00



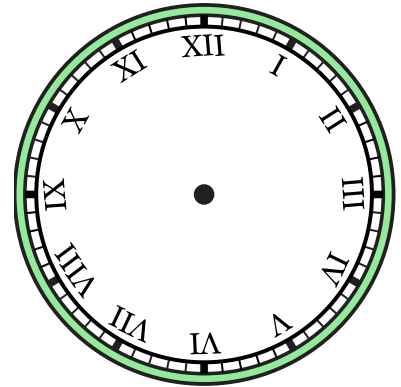
2)

7:00



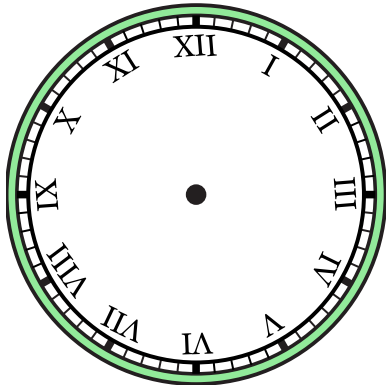
3)

4:00



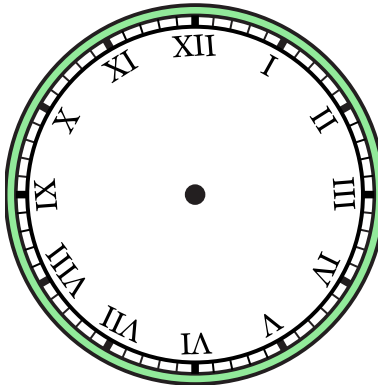
4)

12:00



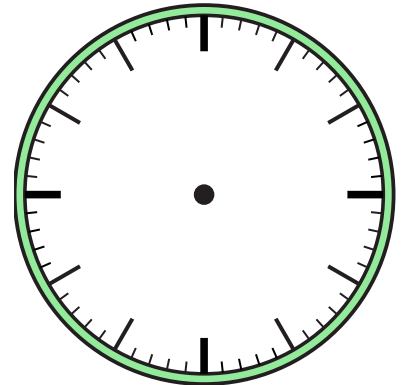
5)

5:00



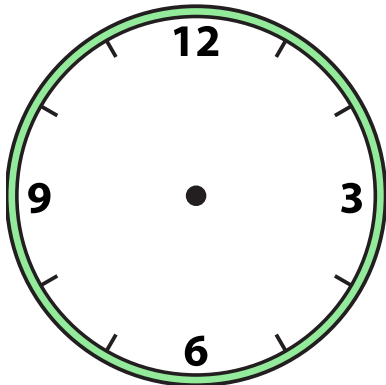
6)

2:30



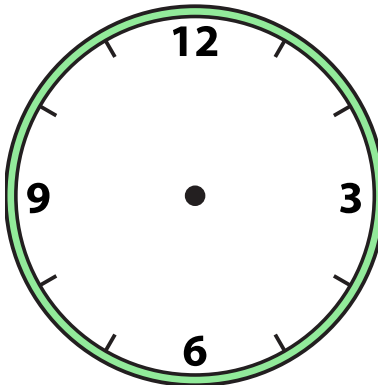
7)

9:30



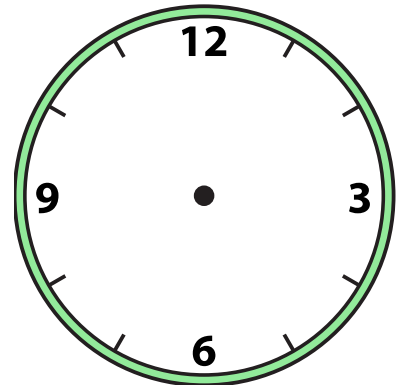
8)

3:30



9)

11:30

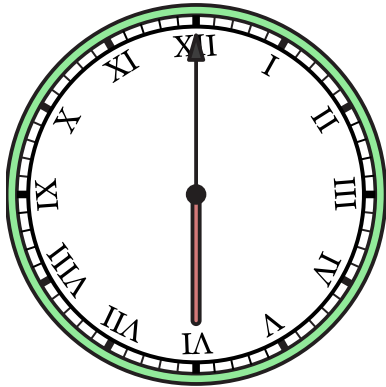




Draw the hour and minute hand on the clock so it represents the time shown.

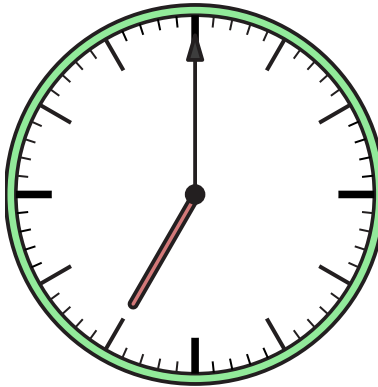
1)

6:00



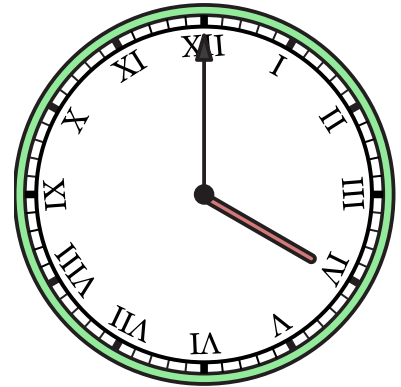
2)

7:00



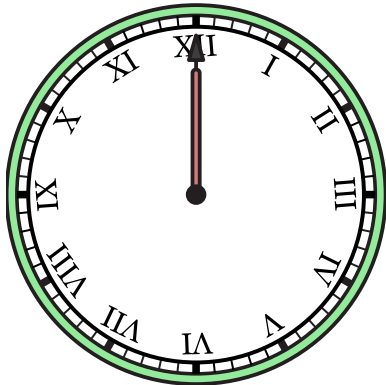
3)

4:00



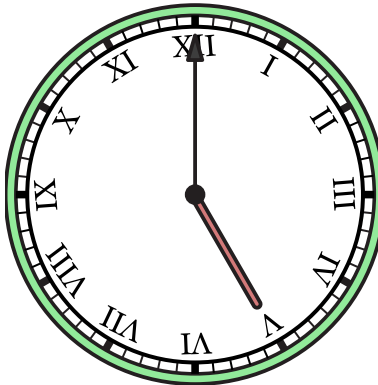
4)

12:00



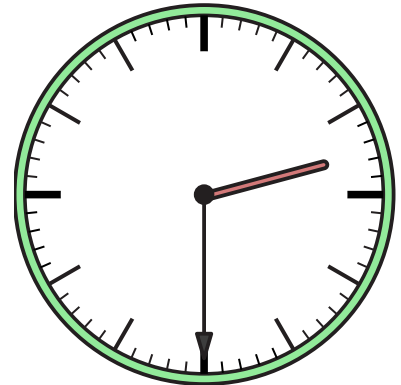
5)

5:00



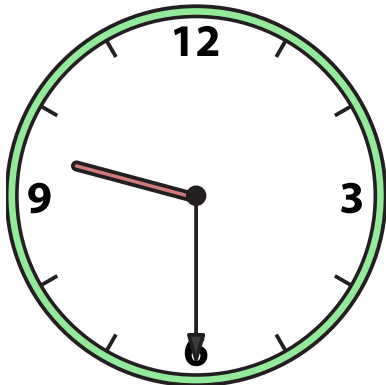
6)

2:30



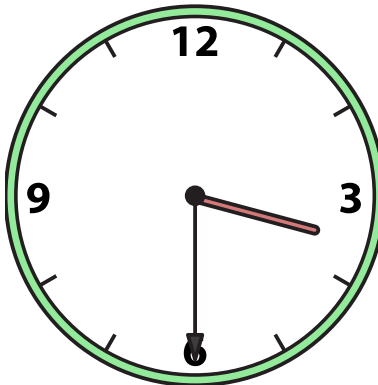
7)

9:30



8)

3:30



9)

11:30

