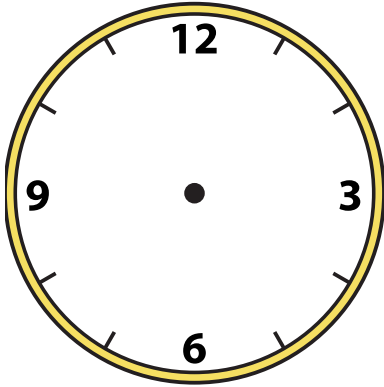




Draw the hour and minute hand on the clock so it represents the time shown.

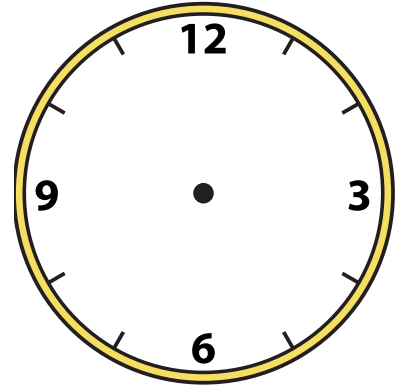
1) 6:30



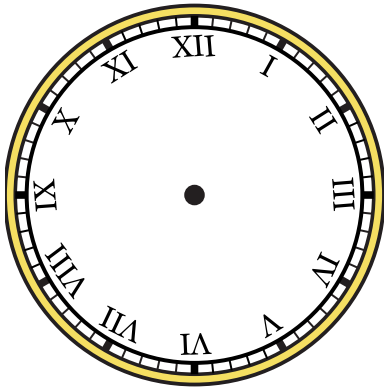
2) 6:15



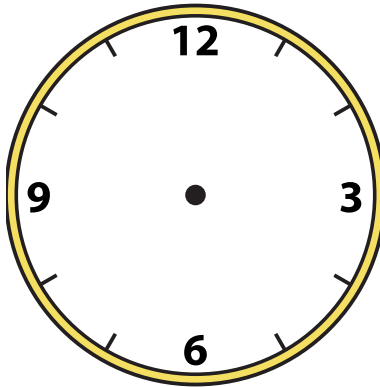
3) 12:00



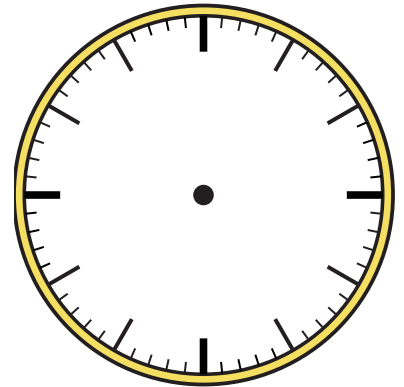
4) 10:45



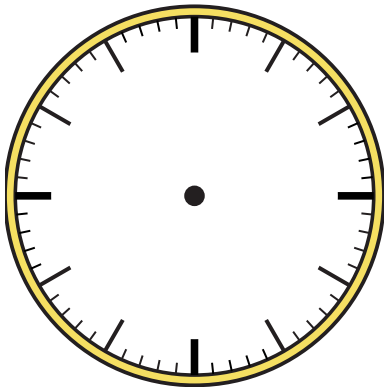
5) 12:00



6) 6:45



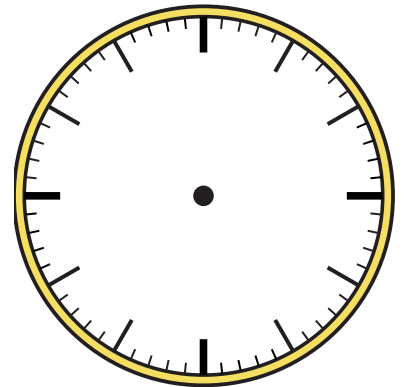
7) 6:00



8) 8:30



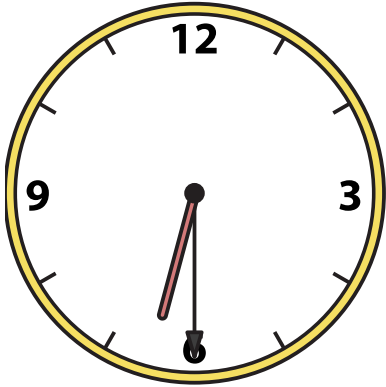
9) 1:30



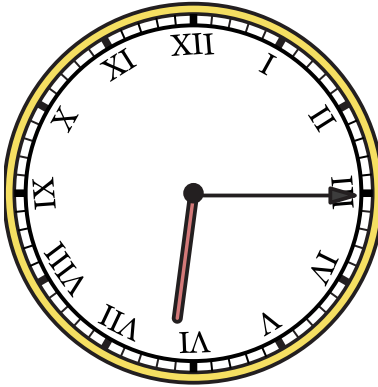


Draw the hour and minute hand on the clock so it represents the time shown.

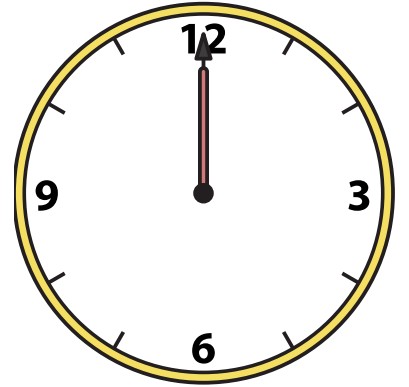
1) 6:30



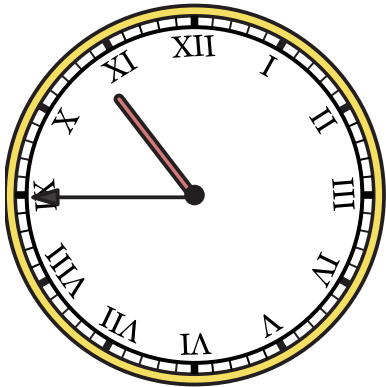
2) 6:15



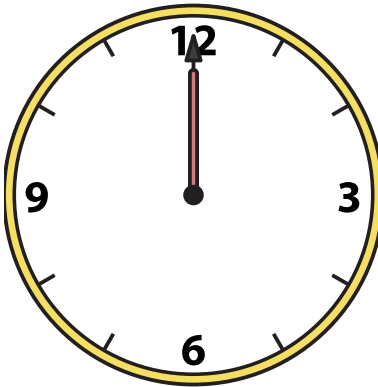
3) 12:00



4) 10:45



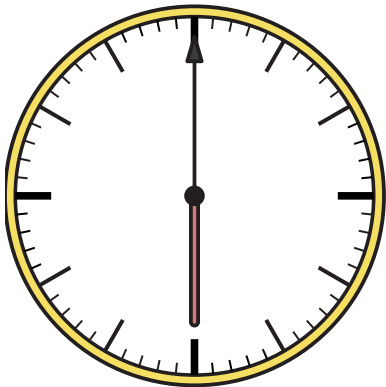
5) 12:00



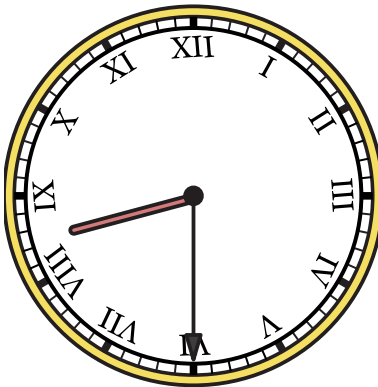
6) 6:45



7) 6:00



8) 8:30



9) 1:30

