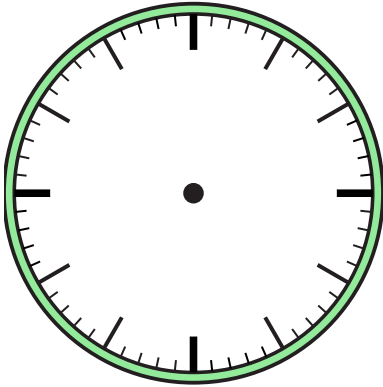


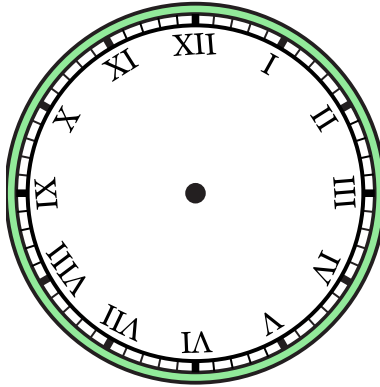


Draw the hour and minute hand on the clock so it represents the time shown.

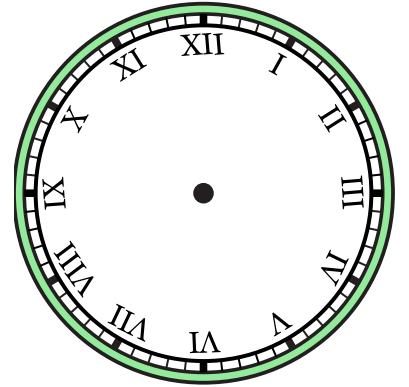
1) 6:00



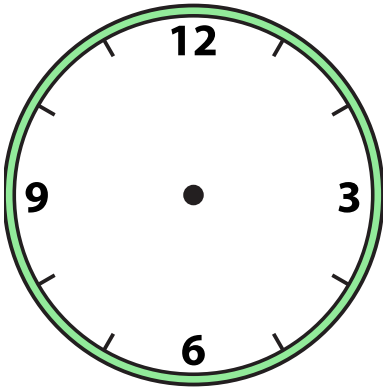
2) 11:30



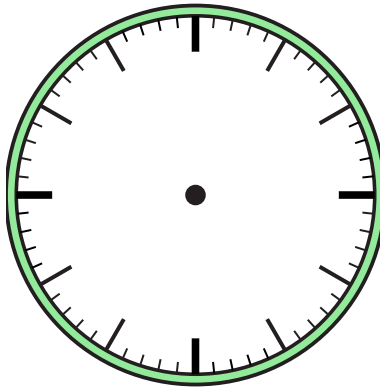
3) 12:00



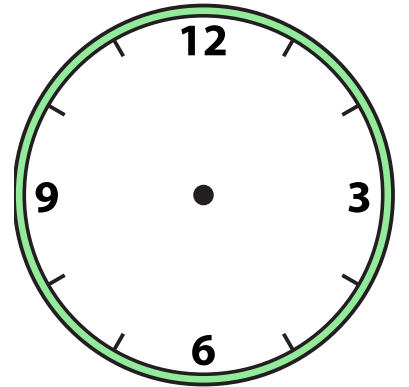
4) 9:00



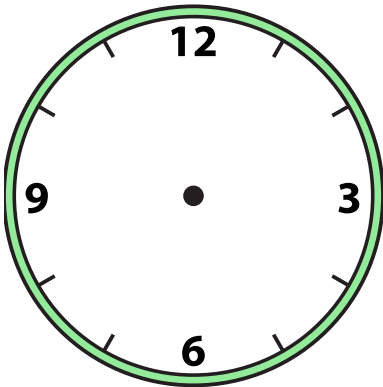
5) 12:00



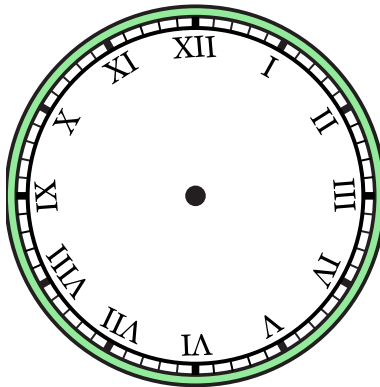
6) 6:30



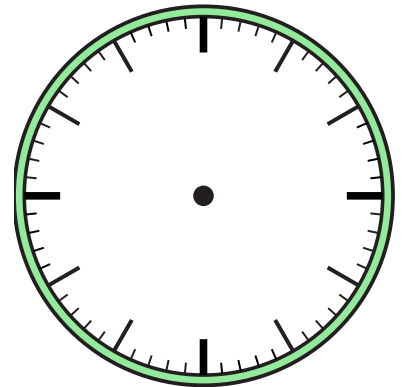
7) 10:30



8) 3:00



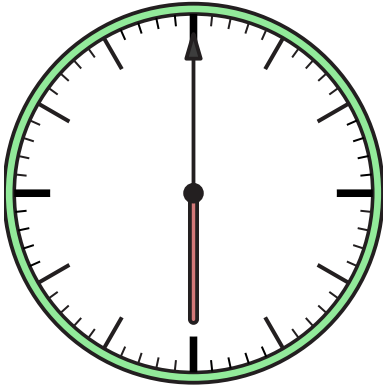
9) 11:00



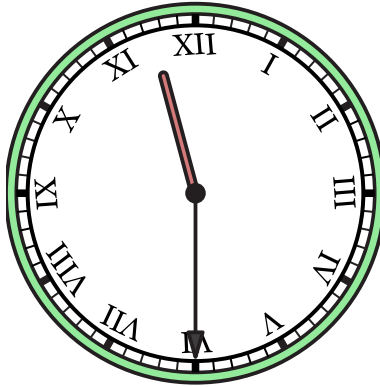


Draw the hour and minute hand on the clock so it represents the time shown.

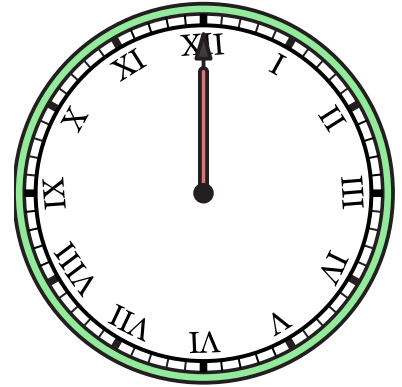
1) 6:00



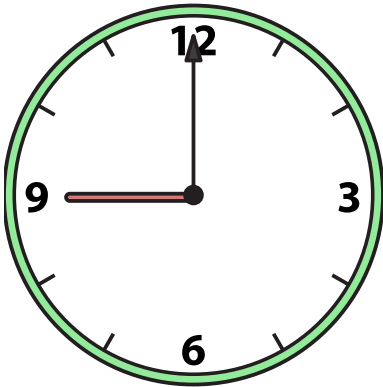
2) 11:30



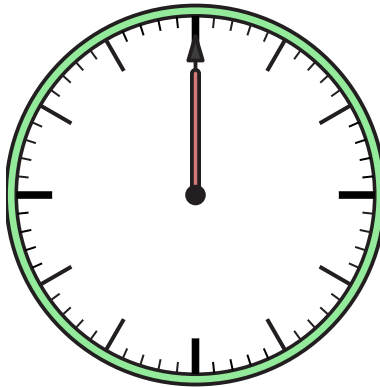
3) 12:00



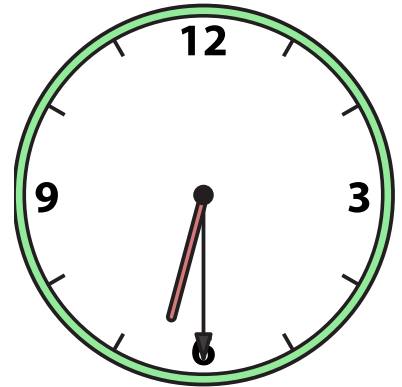
4) 9:00



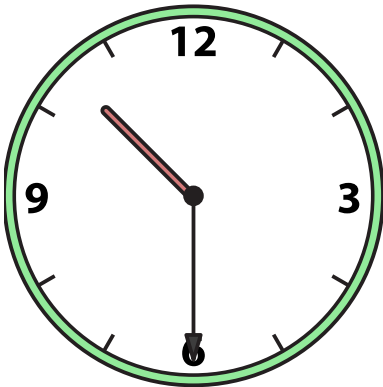
5) 12:00



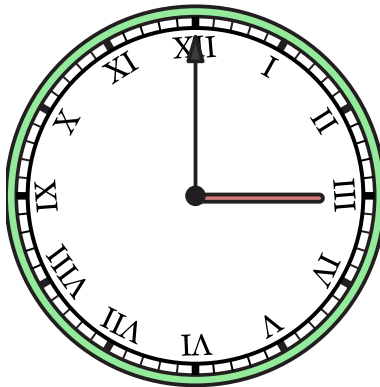
6) 6:30



7) 10:30



8) 3:00



9) 11:00

