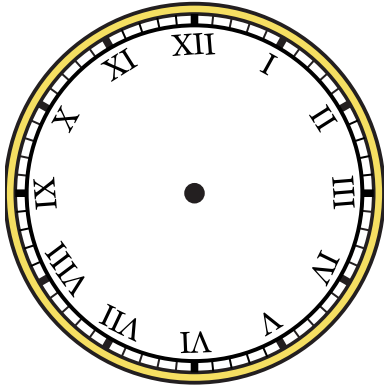


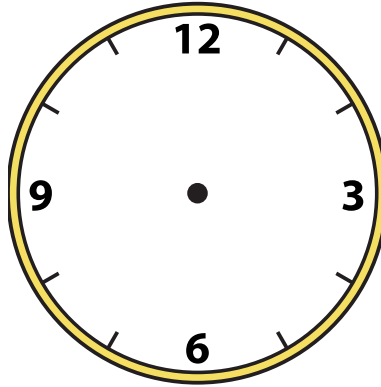


Draw the hour and minute hand on the clock so it represents the time shown.

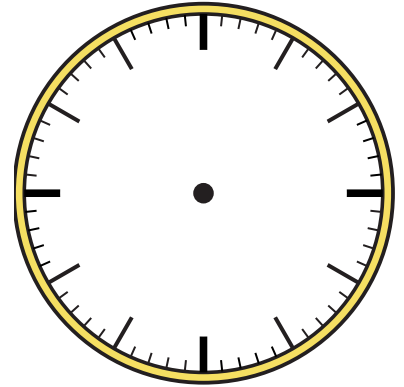
1) 2:00



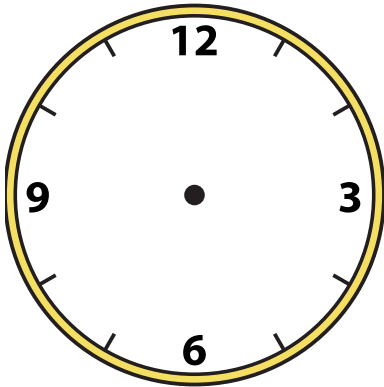
2) 2:30



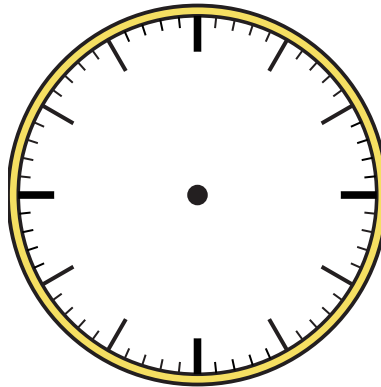
3) 8:15



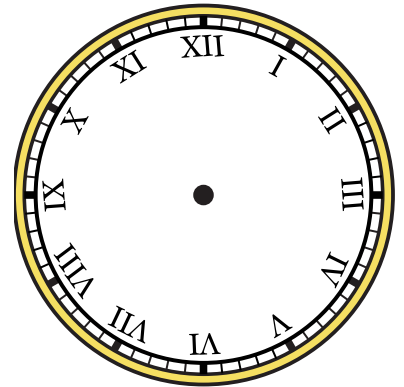
4) 4:30



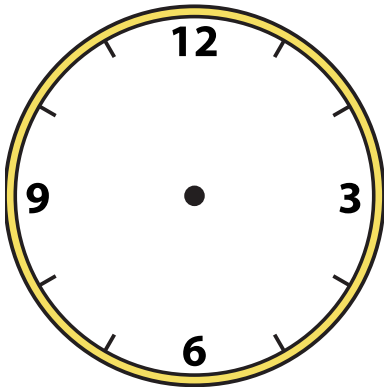
5) 10:45



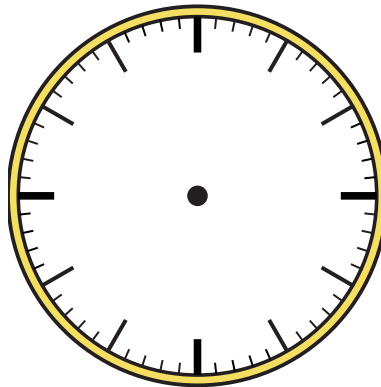
6) 11:00



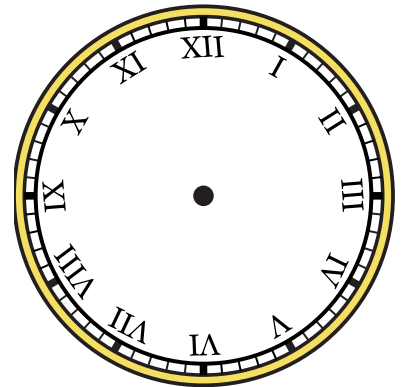
7) 4:00



8) 5:15



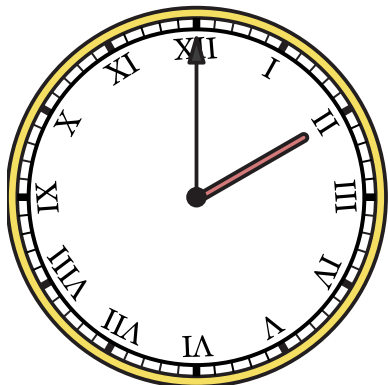
9) 12:30



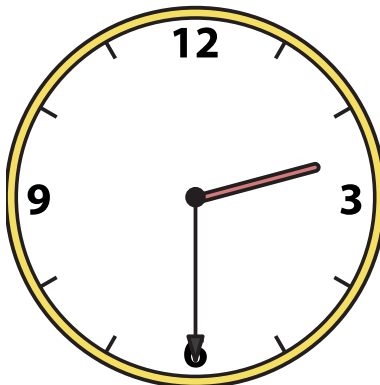


Draw the hour and minute hand on the clock so it represents the time shown.

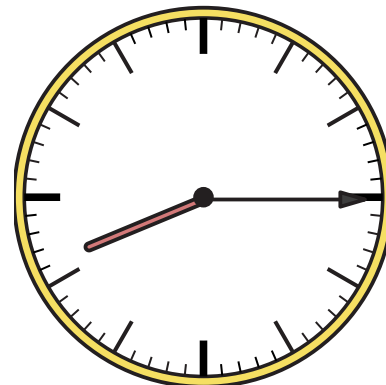
1) 2:00



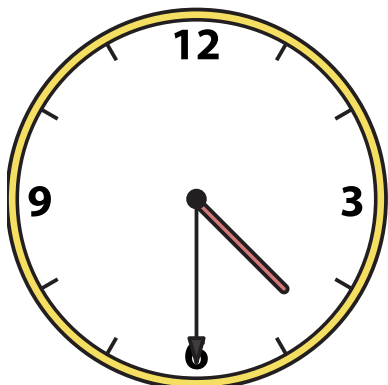
2) 2:30



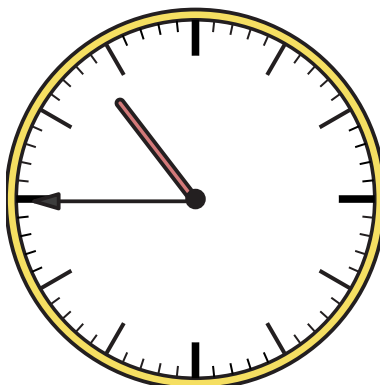
3) 8:15



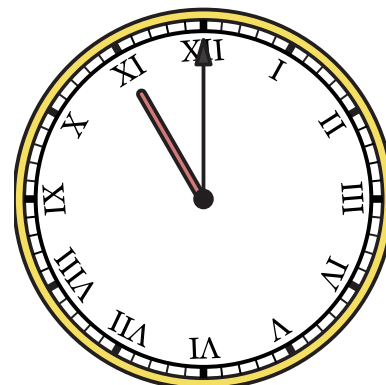
4) 4:30



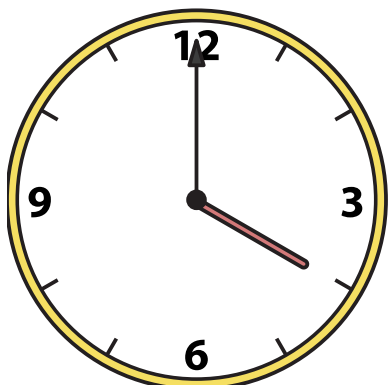
5) 10:45



6) 11:00



7) 4:00



8) 5:15



9) 12:30

